

FLARE-C lens for Cree XLamp XR, XR-C and XR-E



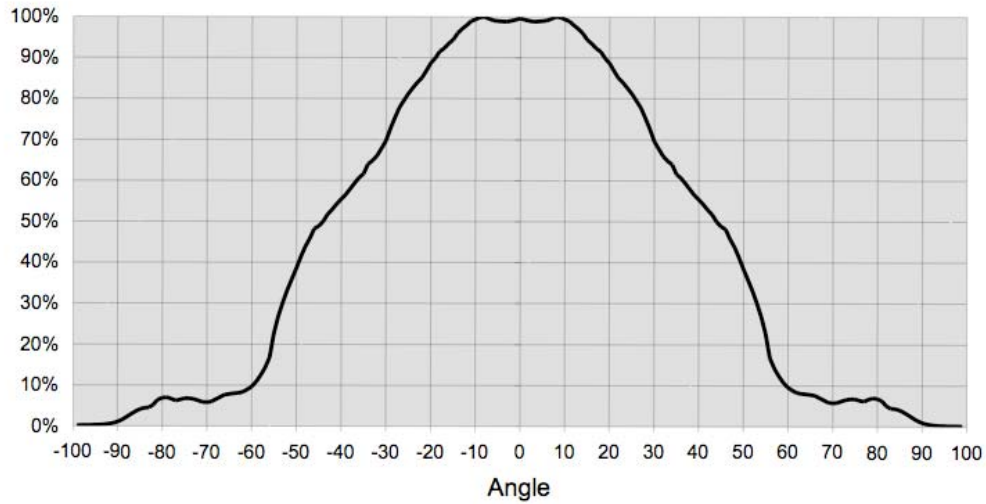
- Lens designed for Cree XLamp XR, XR-C and XR-E
- Lens material optical grade PMMA with high UV and temperature resistance (105°C/220°F). Allows use of high current and temperature conditions
- Best available optical efficiency
- Fastening to PCB & heat sink with 2 screws
- LED can be assembled parallel or perpendicular to the x,y axis (to turn the light distribution by 90°)
- Compact dimensions 23 x 25 mm. Square form enables easy build of a line without any gaps between lenses.
- **Especially suitable for Beacon and other 360° solutions and in linear solutions with high evenness requirements**

NAME	ORDERING CODE	FWHM Angle
FLARE Lens Cree	FLARE-C	$\pm 4^\circ \times \pm 45^\circ$

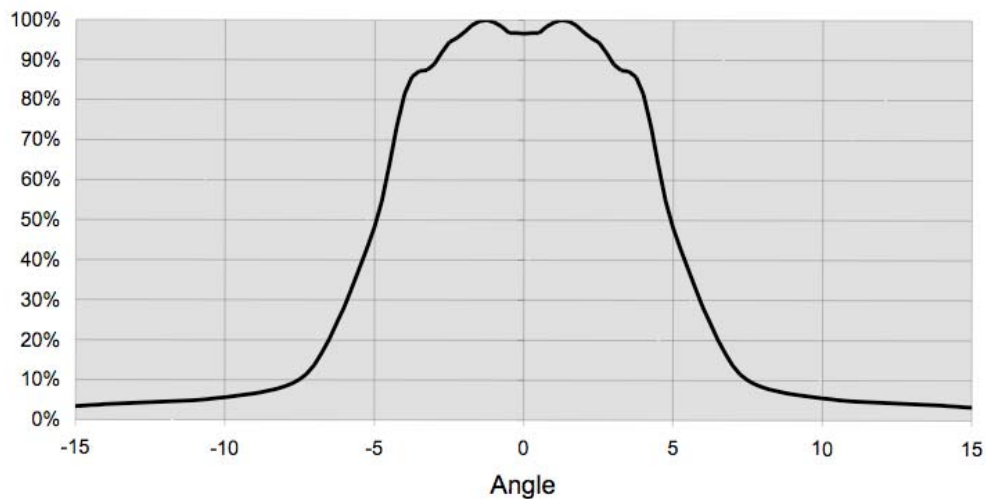


MEASUREMENTS

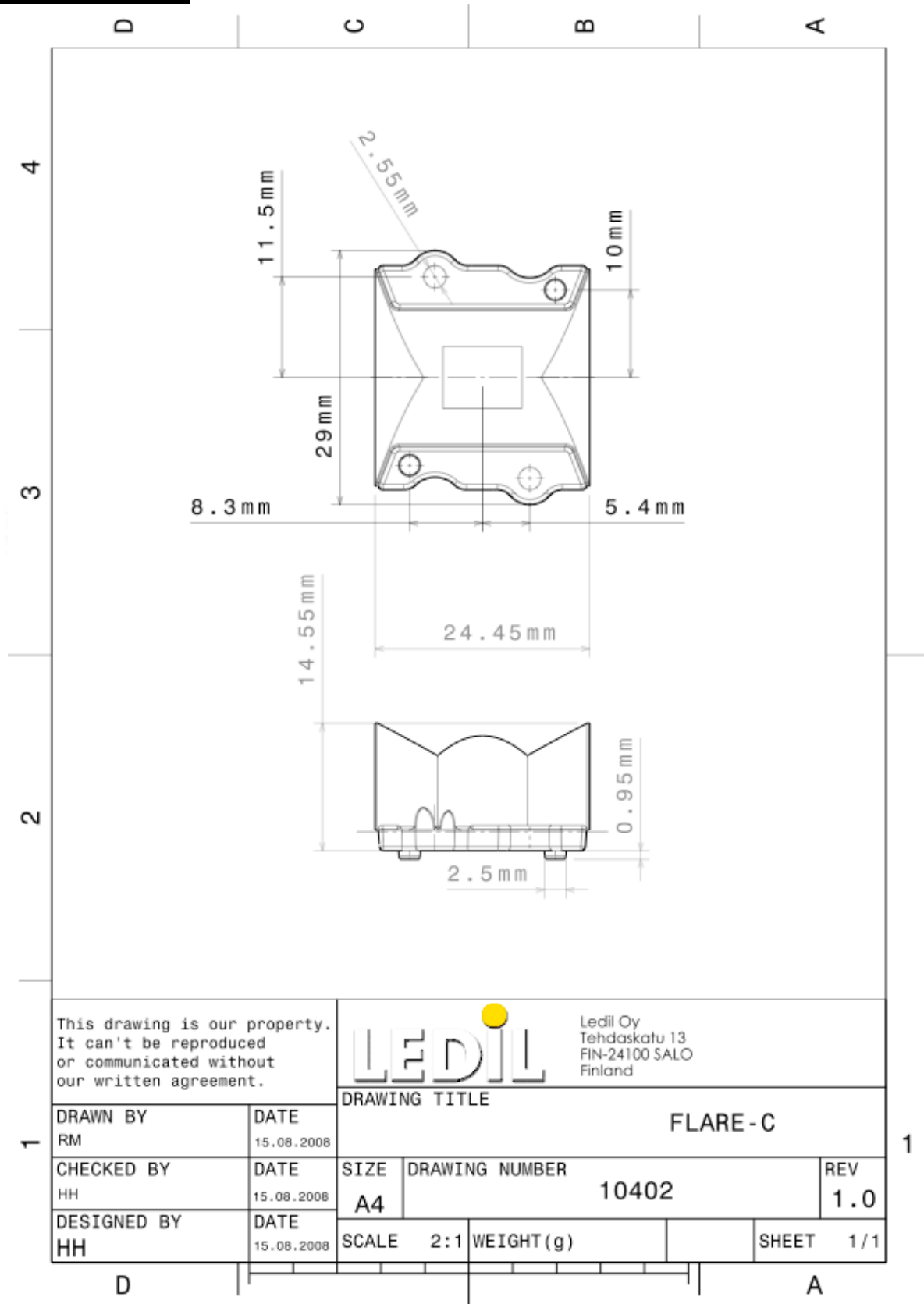
Relative horizontal intensity of FLARE-C



Relative vertical intensity of FLARE-C



DRAWING



© Ledil Oy - Subject to change without prior notice