

**CUTE-3 MR11, lenses for CREE XR-E LEDs**

- Specially designed for Cree XLAMP XR-E series of LEDs.
- Special care taken to make a uniform white or warm white illumination. Lenses work well with other colors, too.
- Lens material optical grade PMMA. Allows use of high current and temperature conditions
- Best available optical efficiency, up to 90%.

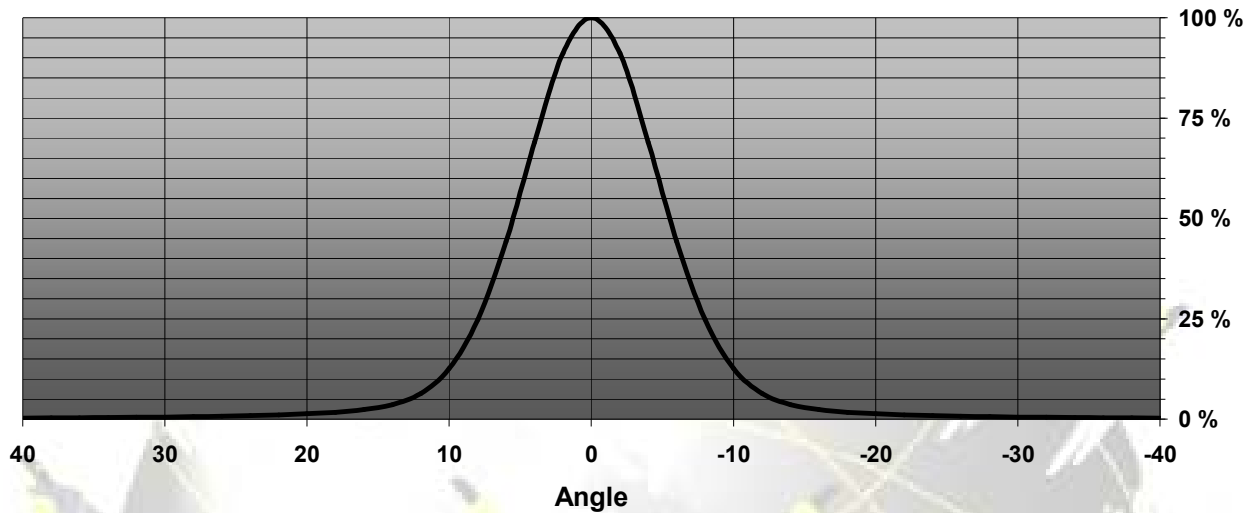
**LENS TYPES**

NAME	ORDERING CODE	FWHM Angle
CUTE-3 SMOOTH SPOT	CUTE-3-SS	$\pm 5^\circ$
CUTE-3 MEDIUM	CUTE-3-M	$\pm 10^\circ$

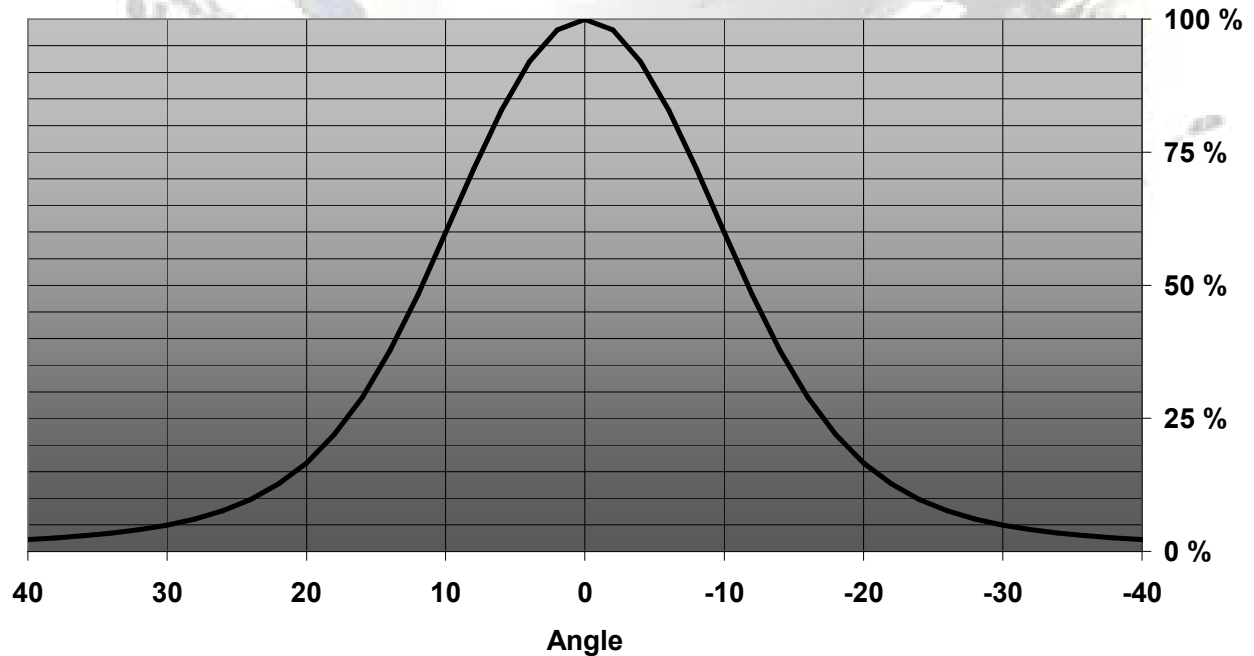
© Ledil Oy – PRELIMINARY - Subject to change without prior notice

## MEASUREMENT DATA

Relative Intensity CUTE-3-SS



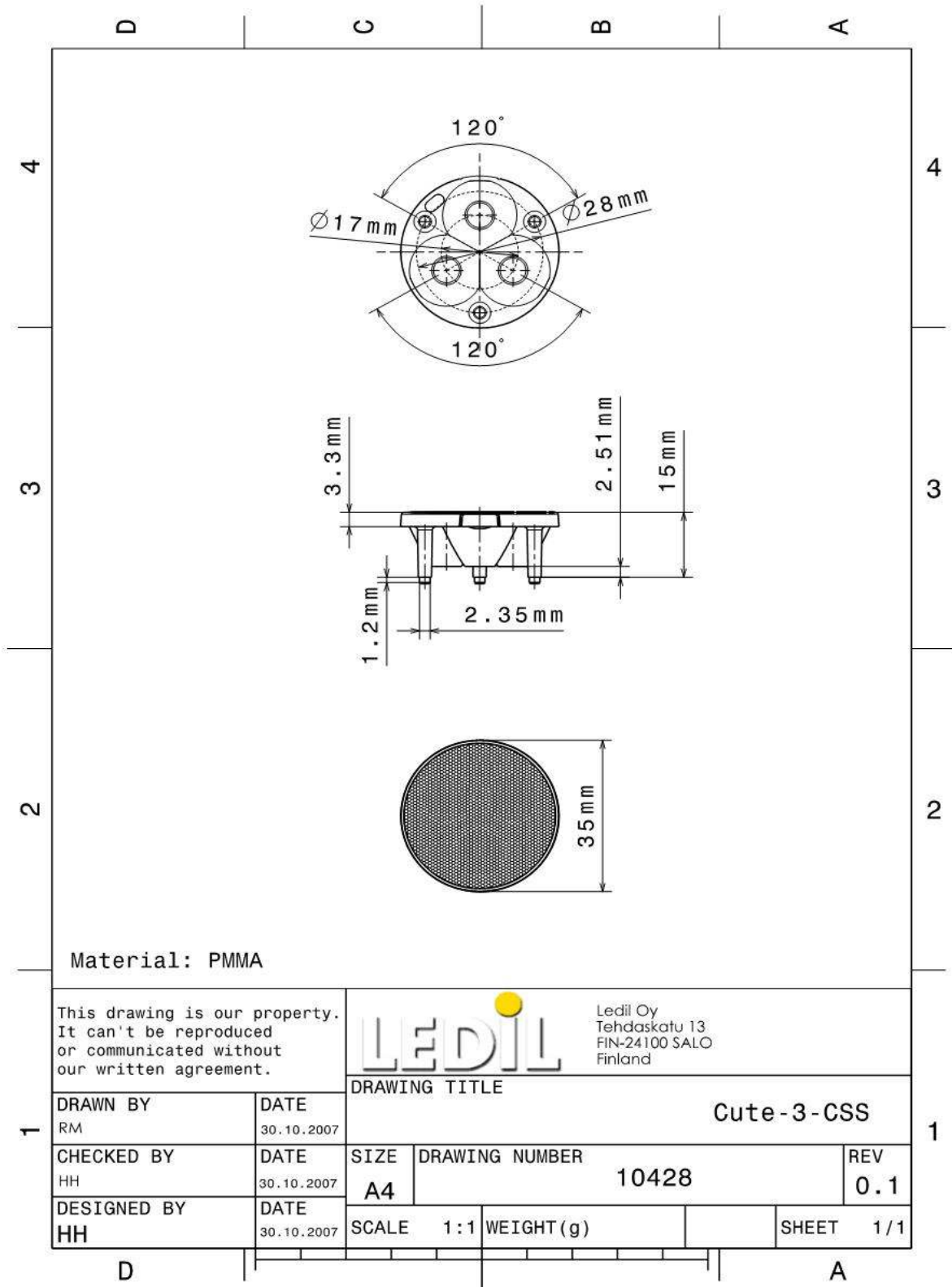
Relative Intensity of CUTE-3-M



EULUMDAT & IES FILES AVAILABLE BY REQUEST

© Ledil Oy – PRELIMINARY - Subject to change without prior notice

## DRAWINGS



© Ledil Oy - PRELIMINARY - Subject to change without prior notice